

Apt 7 Ventry Court 523 Barlow Moor Road, Chorlton, Manchester, M21 8AQ



JP&Brimelow
ESTATE AGENTS

Offers In The Region Of £240,000

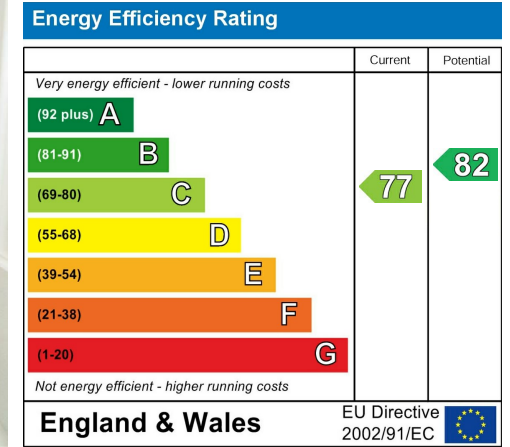


VIDEO TOUR AVAILABLE A delightful and well- presented, TWO BEDROOM, first floor apartment positioned to the front of this development. This attractive detached period conversion is located in the heart of Chorlton on Barlow Moor Road. Situated within walking distance to the centre of Chorlton and all its amenities, Metrolink station on Wilbraham Road, giving you direct access into the city centre, media city and Manchester International Airport and strolling distance from Beech Road with all its independent bars, cafes, restaurants and Chorlton Park. The well-planned accommodation consists of; a communal entrance hall with stairs leading to all floors, a private entrance hall, a good-sized lounge to the front aspect, a fitted kitchen, a white three-piece bathroom suite, and two good sized bedrooms. The apartment benefits from; gas fired central heating, an intercom system, and allocated off-road parking to the rear.



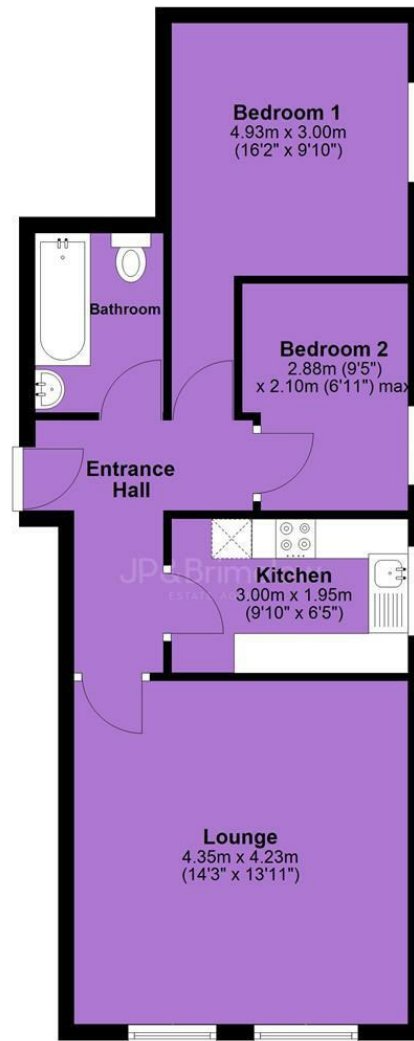


EPC Chart



Tenure: **Leasehold** Council Tax Band: **B**

First Floor



JP & Brimelow Estate Agents Ltd
430 Barlow Moor Road, Manchester, M21 8AD
Tel: 0161 8822233
E: sales@jpbrimelow.co.uk www.jpandbrimelow.co.uk



JP & Brimelow
ESTATE AGENTS

NOTICE: JP & Brimelow Estate Agents Ltd for themselves and for the vendors or lessors of this property whose agents they are give notice that:

- (i) the particulars are set out as a general outline only for the guidance of intending purchasers or lessees, and do not constitute, nor constitute part of, an offer or contract;
- (ii) all descriptions, dimensions, references to the condition and necessary permissions for use and occupation, and other details are given in good faith and are believed to be correct but any intending purchasers or tenants should not rely on them as statements or representations of fact but must satisfy themselves by inspection or otherwise as to the correctness of each of them;
- (iii) no person in the employment of JP & Brimelow Estate Agents Ltd has any authority to make or give any representation or warranty whatever in relation to this property.

 [jpandbrimelowstateagents](https://www.instagram.com/jpandbrimelowstateagents)

 [@jpandbrimelow](https://twitter.com/jpandbrimelow)